



Servicios de colaboración integral



### SCI Success Stories:

Comprehensive Tax Management  
business line - Tax Collection in  
Castellón.

Support in collection management  
during the early and penalty  
payment periods for the local  
authority of Castellón de la Plana.

Comprehensive Tax Management business line  
- Tax Collection in Castellón.

Support in collection management during the early and penalty payment periods for the local authority of Castellón de la Plana.



**AJUNTAMENT  
DE CASTELLÓ**

For more than 35 years now, **SCI** (under different company names) has been working with the Local Authority of Castellón de la Plana in collection management in both the early and penalty payment periods.

Over these years, **SCI** has tendered to be awarded the service on at least seven occasions, and we have progressively applied all the changes necessary to adapt our procedures and resources both to changes in legislation and new technological procedures.

In this regard, purely by way of example:

- We have made 4 changes to the location of the Service Office, aiming at all times to select the best option for both operability and citizen convenience.
- 
- We were the first, nationwide, to use the banking regulations for management of the collection of payments via collaborating banking institutions using Format C60, along with direct debits using Format C19.
- 
- We were the first, nationwide, to sign partnership agreements with the Spanish Tax Agency, the AEAT, for the attachment of tax refunds.
- 
- We were the first, nationwide, to sign agreements with the Social Security for the exchange of information by means of files connected with benefits received both from companies and as pensions.
- 
- And we could go on listing the various initiatives and procedures implemented by **SCI** in active partnership with the municipal technical staff, the aim at all times being to adapt procedures to the legislation in force at any given time, and to optimize operations.

This is what we believe we have achieved, as demonstrated by the economic figures set out below, without ever having received any penalty or warning whatsoever as a result of our actions.

>>

Comprehensive Tax Management business line - Tax Collection in Castellón.

Support in collection management during the early and penalty payment periods for the local authority of Castellón de la Plana.

## Early payment period management in (2013/14/15/16)

E.G.	CONCEPT	NET CHARGE *	EARLY PAYMENT	% EARLY PAYMENT	E.G.	CONCEPT	NET CHARGE *	EARLY PAYMENT	% EARLY PAYMENT
Main population registers					Main population registers				
2013	VEHICLE ENTRANCE	1,904,314.19 €	1,796,325.44 €	94.33%	2014	VEHICLE ENTRANCE	1,851,816.41 €	1,755,453.09 €	94.80%
2013	MOTOR VEHICLE TAX	10,792,956.56 €	8,200,928.51 €	75.98%	2014	MOTOR VEHICLE TAX	10,476,190.36 €	7,954,338.95 €	75.93%
2013	URBAN PROPERTY TAX	53,581,788.83 €	47,141,036.15 €	87.98%	2014	URBAN PROPERTY TAX	53,366,807.90 €	46,995,049.78 €	88.06%
2013	RURAL PROPERTY TAX	981,811.28 €	849,833.69 €	86.56%	2014	RURAL PROPERTY TAX	1,113,466.48 €	930,336.46 €	83.55%
2013	SPECIAL PROPERTY TAX	4,190,986.17 €	4,167,472.10 €	99.44%	2014	SPECIAL PROPERTY TAX	3,905,007.63 €	2,847,485.91 €	72.92%
2013	REFUSE CHARGE	10,687,151.96 €	8,507,186.12 €	79.60%	2014	REFUSE CHARGE	10,596,829.09 €	8,499,141.61 €	80.20%
2013	ECONOMIC ACTIVITY TAX	5,252,571.23 €	4,701,687.46 €	89.51%	2014	ECONOMIC ACTIVITY TAX	5,570,585.86 €	5,027,452.29 €	90.25%
	<b>TOTAL</b>	<b>87,391,580.22 €</b>	<b>75,364,469.47 €</b>	<b>86.24%</b>		<b>TOTAL</b>	<b>86,880,703.73 €</b>	<b>74,009,258.09 €</b>	<b>85.18%</b>

E.G.	CONCEPT	NET CHARGE *	EARLY PAYMENT	% EARLY PAYMENT	E.G.	CONCEPT	NET CHARGE *	EARLY PAYMENT	% EARLY PAYMENT
Main population registers					Main population registers				
2015	VEHICLE ENTRANCE	1,856,075.11 €	1,767,384.53 €	95.22%	2016	VEHICLE ENTRANCE	1,846,129.81 €	1,773,787.18 €	96.08%
2015	MOTOR VEHICLE TAX	10,247,060.65 €	7,884,189.90 €	76.94%	2016	MOTOR VEHICLE TAX	10,405,275.96 €	8,124,370.73 €	78.08%
2015	URBAN PROPERTY TAX	56,976,629.47 €	49,148,132.57 €	86.26%	2016	URBAN PROPERTY TAX	60,894,903.93 €	54,208,702.98 €	89.02%
2015	RURAL PROPERTY TAX	1,159,575.56 €	972,114.35 €	83.83%	2016	RURAL PROPERTY TAX	1,177,057.64 €	1,035,493.98 €	87.97%
2015	SPECIAL PROPERTY TAX	7,587,303.54 €	7,540,555.56 €	99.38%	2016	SPECIAL PROPERTY TAX	8,298,061.74 €	8,254,371.02 €	99.47%
2015	REFUSE CHARGE	10,311,843.66 €	8,247,164.03 €	79.98%	2016	REFUSE CHARGE	10,692,857.19 €	8,608,019.78 €	80.50%
2015	ECONOMIC ACTIVITY TAX	6,801,973.00 €	6,027,975.30 €	88.62%	2016	ECONOMIC ACTIVITY TAX	6,066,671.83 €	5,384,654.79 €	88.76%
	<b>TOTAL</b>	<b>94,940,460.99 €</b>	<b>81,587,516.24 €</b>	<b>85.94%</b>		<b>TOTAL</b>	<b>99,380,958.10 €</b>	<b>87,389,400.46 €</b>	<b>87.93%</b>

## Summary

FINANCIAL YEAR	% EARLY PAYMENT
<b>2013</b>	<b>86.24%</b>
<b>2014</b>	<b>85.18%</b>
<b>2015</b>	<b>85.94%</b>
<b>2016</b>	<b>87.93%</b>

## Urban property tax management - early and penalty payment periods

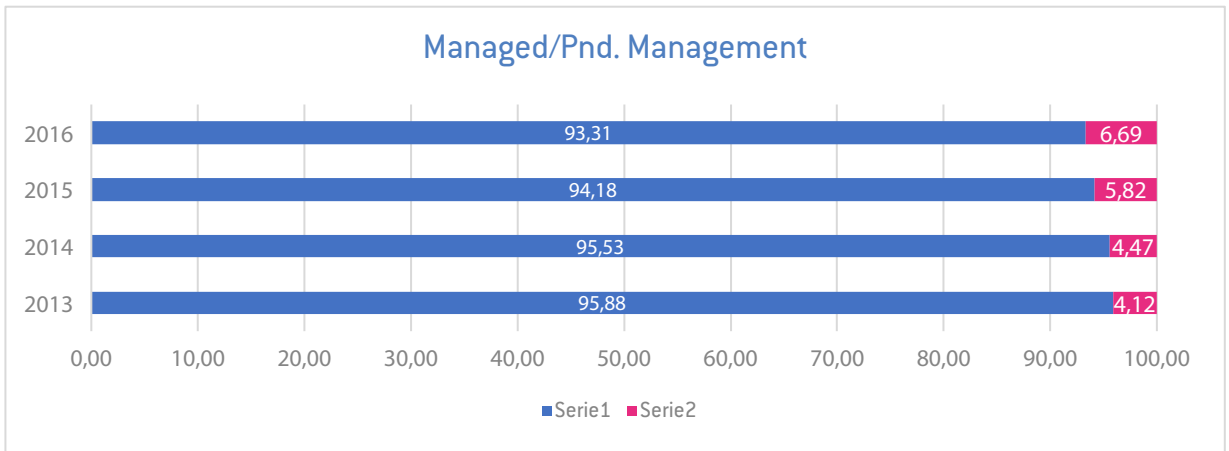
FINANCIAL YEAR	INITIAL VOLUNTARY CHARGE	PENDING RECEIPT(*)	% ADMINISTERED/INITIAL CHARGE	% PENDING RECEIPT/INITIAL CHARGE
<b>2013</b>	54,883,740.03	2,259,879.25	95.88	4.12
<b>2014</b>	54,779,430.28	2,446,444.55	95.53	4.47
<b>2015</b>	57,955,482.35	3,374,530.65	94.18	5.82
<b>2016</b>	58,830,185.30	3,934,564.61	93.31	6.69

(\*) The figures show the total pending receipt, including amounts suspended, frozen, insolvency proceedings, etc. Figures as at 28/03/2017.



Comprehensive Tax Management  
business line - Tax Collection in Castellón.

Support in collection management during  
the early and penalty payment periods for  
the local authority of Castellón de la Plana.



### Collection management in penalty payment period.

FINANCIAL YEAR	NET CHARGE	REVENUE (*)	% REVENUE (*)
2013	16,780,430.58	8,696,795.76	51.83
2014	16,507,430.58	8,212,663.80	49.75
2015	14,816,660.95	7,765,672.92	52.41
2016	12,229,459.94	3,994,056.75	32.66

### MANAGEMENT IN PENALTY PAYMENT PERIOD

